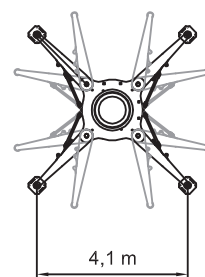
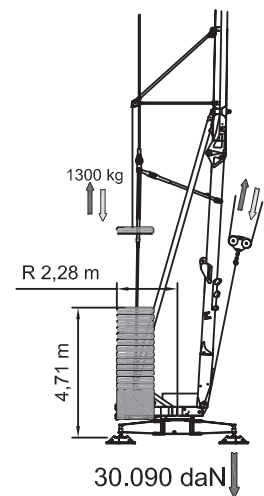


	400V (±10%) 50 Hz		18kVA		
	m/l'	▶	▶▶	▶▶▶	▶▶▶▶
	kg	6,3	21	31	48
	kW	15 (Inverter)			
	m/l'	▶	▶▶	▶▶▶	
	kg	17.8	28.6	53.5 (↗39.3)	
	kW	3 (Inverter)			
	n/l'	▶	▶▶	▶▶▶	
	kW	0.17	0.42	0.85	
	min	▶			
	kW 3	12		15.240 kg	5.200 kg + 16.900 kg
	5200 kg	2600 kg	0 kg		
P1	8750 kg 8020 kg *	6616 kg 5916 kg *	4483 kg 3811 kg *		
P2	11690 kg 12420 kg *	11224 kg 11924 kg *	10757 kg 11429 kg *		



Alle technischen Angaben ohne Gewähr. Irrtümer und Änderungen vorbehalten.  
All technical data is without guarantee, errors and changes are reserved.

Am Dornbusch 10  
64390 Erzhausen  
www.eurogru.de

Telefon: +49 (0) 6150 13440  
Fax: +49 (0) 6150 7002  
Email: kontakt@eurogru.de

**EUROGRU**<sup>®</sup>  
BAUKRANE SEIT 1962